



2013

Kitchen and Dining Hall completed. Created a space for residents and staff to gather at tables for social fellowship at mealtime and provides a spiritual space for worship and community gatherings.

Water Purification System installed.

Generator installed.

Support Light of Hope Campus Projects

As we seek to expand services to provide refuge, restoration, and redirection to 200 girls by 2017, Light of Hope is in the process of building additional permanent facilities. **PHASE 1**, which included four classrooms and supporting office space, was completed in 2011. **PHASE 2**, a new kitchen and dining hall, was completed in January 2013. **PHASE 3**, a medical building, has been completed and is being used as a temporary dorm and permanent medical office.

PHASE 4: A Dormitory, to be completed by January, 2015.

Currently many of the girls live in small temporary dormitories without indoor plumbing. As the number of girls at Light of Hope grows the need for adequate dormitory space has increased. The projected new permanent dormitory will be 2 stories; each story will house 80 girls and will be built in 2 phases. The first floor will be completed in January 2015.

Facing Our Future

At Light of Hope, we grow one project at a time. All campus projects are **fully funded** when we begin. Our future needs include a third permanent dorm and continued expansion of our classroom facilities.

The site plan and future projects are determined by the founders and Lighthouse Ministries International (LMI) board and are based on the prioritized needs at the school. Light of Hope hires local Kenyan workers to complete all projects, which helps to support the local economy and gives the community a vested interest in the school's success.

Support the Light of Hope Campus Project today at www.lightofhopekenya.org.

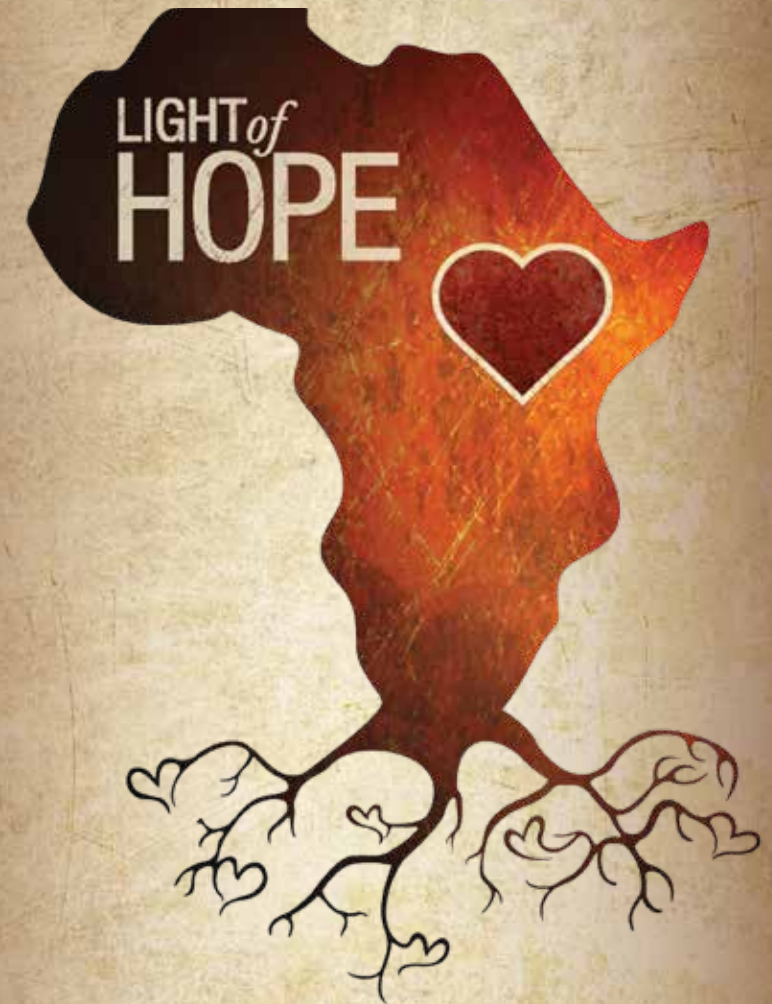
www.lightofhopekenya.org



Like us on Facebook: [lightofhopekenya](https://www.facebook.com/lightofhopekenya)

Light of Hope is a project of Lighthouse Ministries International, which is a registered 501(c)(3). Federal Tax ID 71-0886289.

Timeline



2004

8 acres of land purchased in the Rift Valley outside of Naivasha, Kenya.



2005

Construction of dorm completed and temporary classrooms created. First 6 girls arrive at LOH.



2006

Additional temporary classrooms created.

2007

Enrolled 20 additional students.

2008

Electricity and well built.
Library constructed.
Expanded cow shed.
Front gate and guard house built.
Music Program introduced.



2009

Playground, volleyball court, basketball court constructed.
Expanded chicken coop.
Maintenance shed built.
Irrigation system added (operational in February 2011).



2010

Clinic walls and roof completed.
Toilet/shower facility completed.
Water tank installed.
Organic gardens planted.
Additional 7 acres of land purchased.



2011

High School Girls Dorm completed (houses 28 girls).
Fish pond built on new property (populated with Tilapia).
New uniforms were purchased.
4 classrooms and office space completed.